



Henan Feilong Engineering Manufacturing Co., LTD

Add: No. 1 Weilai Avenue Industry Gathering Area of Lankao County Kaifeng City Henan Province

Mob& Wechat& Whatsapp: +86-157 1388 7786

E-Mail: XFGCrane@gmail.com



XINFEIG Crane SQS200

8TON Straight boom crane

- Equipped with the XINFEIG SQS200, 5-section straight boom crane, the crane lifting capacity is 8Ton ,max. boom outreach is 17.5m, max. crane working height is 20m.
- Planet slewing reducer, large torque, ensure slewing smoothly and strong working ability, plunger pump provide strong powerful resource.
- hexagonal shape Boom section, 1 cylinder, 3 rope connection, reliable and efficient.



Henan Feilong Engineering Manufacturing Co., LTD

Add: No. 1 Weilai Avenue Industry Gathering Area of Lankao County Kaifeng City Henan Province

Mob& Wechat& Whatsapp: +86-157 1388 7786

E-Mail: XFGCrane@gmail.com





Henan Feilong Engineering Manufacturing Co., LTD

Add: No. 1 Weilai Avenue Industry Gathering Area of Lankao County Kaifeng City Henan Province

Mob& Wechat& Whatsapp: +86-157 1388 7786

E-Mail: XFGLCrane@gmail.com

Crane with upper operation cabin





Henan Feilong Engineering Manufacturing Co., LTD

Add: No. 1 Weilai Avenue Industry Gathering Area of Lankao Country Kaifeng City Henan Province

Mob& Wechat& Whatsapp: +86-157 1388 7786

E-Mail: XFGCrane@gmail.com





Henan Feilong Engineering Manufacturing Co., LTD

Add: No. 1 Weilai Avenue Industry Gathering Area of Lankao County Kaifeng City Henan Province

Mob& Wechat& Whatsapp: +86-157 1388 7786

E-Mail: XFGCrane@gmail.com



Crane parts list

Project Name	Manufacturers	Note
Boom material	China Baogang group	BS700MCK2, high strength steel
Boom frame Type		hexagonal shape 6-angle boom
Hydraulic pump	PZB, Italy	Plunger pump
Upper direction valve	YUZHOU Hydraulic	China
Outrigger direction valve	LITE Hydraulic	China
Balance valve	YUZHOU Hydraulic	China
Cylinder	ZF, China	ZHENG FENG HYDRAULIC, China
Rotary device	ZH Hydraulic	ZHI HE, China



Henan Feilong Engineering Manufacturing Co., LTD

Add: No. 1 Weilai Avenue Industry Gathering Area of Lankao County Kaifeng City Henan Province

Mob& Wechat& Whatsapp: +86-157 1388 7786

E-Mail: XFGCrane@gmail.com





Henan Feilong Engineering Manufacturing Co., LTD

Add: No. 1 Weilai Avenue Industry Gathering Area of Lankao County Kaifeng City Henan Province

Mob& Wechat& Whatsapp: +86-157 1388 7786

E-Mail: XFGLCrane@gmail.com





Henan Feilong Engineering Manufacturing Co., LTD

Add: No. 1 Weilai Avenue Industry Gathering Area of Lankao County Kaifeng City Henan Province

Mob& Wechat& Whatsapp: +86-157 1388 7786

E-Mail: XFGCrane@gmail.com

Crane technical specification

Crane	Brand	XINFEIG
	Crane model	SQS200
	Manufacture year	2023
	Rated lifting capacity	8000kg
	Max. Boom outreach	17.5m
	Max outreach lifting capacity	1000kg @14.5m
	Slewing angle(continuous)	360° continuous
	Boom raising angle	0~78°
	Max. lifting height (the measurement from the ground after the outriggers fully extended)	20m
	Length of the basic boom	5.6 m
	Numbers of the boom	5 section
	Outrigger span (fully extended)	5.95m
	Front and rear leg	hydraulic control
	Operating position	On the boarding
	Recommend oil displacement	40L/min

Chassis configuration

- Dongfeng brand special chassis for engineering machinery, Right hand drive, with YUCHAI engine YC4E180-30 Diesel engine, 4 cylinders, 4257ml displacement, engine power 132kw, 180hp. 5100mm wheelbase, front tire 10.00R20 18PR and rear 10.00R20 18PR, The truck payload is 18Tons.
- Single-row cab, electric glass lift, electric reviewer mirror with heating, airbag seat, air conditioner, electronic throttle, ABS braking system.



Henan Feilong Engineering Manufacturing Co., LTD

Add: No. 1 Weilai Avenue Industry Gathering Area of Lankao County Kaifeng City Henan Province

Mob& Wechat& Whatsapp: +86-157 1388 7786

E-Mail: XFGCrane@gmail.com

Chassis configuration

DONGFENG Chassis	Engine brand	YUCHAI
	Engine model	YC4E180-30
	Displacement(ml/kw)	4257/132
	Transmission	Fast 8 speed gear box, manual 8 forward and 2 reserve
	Wheelbase/ No. of axle	5100mm / 2
	Frame(mm)	280 (7+5+5)
	Front axis	6.5T
	Rear axis / Speed ratio	11.5 T/ 4.875
	Tire Specification	Front 10.00R20 18PR rear 10.00R20 18PR
	Tire Number	6 tires and 1 spare tire
	Steel ring	All steel wheel mesh (6+ 1)
	Axle load (kg)	6500/11500
	Total mass(kg)	18000
	Tool box	1 SET
	Fuel Tank	200 L alloy
	Max Speed	88 km/h
	Paint	Metallic paint



Henan Feilong Engineering Manufacturing Co., LTD

Add: No. 1 Weilai Avenue Industry Gathering Area of Lankao County Kaifeng City Henan Province

Mob& Wechat& Whatsapp: +86-157 1388 7786

E-Mail: XFGCrane@gmail.com

Total rated lifting load for boom

full-extend outrigger ,arm at the side or the rear

Load (kg) Range (m)	Load rated weight (kg)				
	Base boom	Second boom	Third boom	Fourth boom	Fifth boom
2.5	×8000				
3.0	×7000	×6500			
3.5	×5000	4500	4000		
4.0	4000	3600	3000	2900	
4.5	3000	2800	2600	2400	2200
5.0		2200	2000	1800	1600
6.0		2000	1800	1600	1400
7.0		1850	1600	1400	1150
8.0		1700	1400	1200	1000
9.0			1200	1000	850
10.0			1100	900	600
12.0				800	500
14.0				700	420
16.0					350
17.0					300
18.0					

Company profile

We are founded in 2004 year, located in Lankao Henan of China, as one of the famous cranes manufacturing factory. we have over 20 years of experience, we has a standardized factory building of 70,000 square meters, office building 5000 square meters.

More then 300 employees. technicians staff 48, Registered capital is RMB 20 million. and has passed the national special vehicle production qualification CCC and ISO9001,ISO14001 certificate.

We pay attention to the quality of products for the life of enterprises, adhere to the production concept of green and environmental protection and it aims to guide the industry towards a sustainable and promising development path.

Company philosophy adheres to innovation and development, respect talents, strengthen management , improve services ,customer demand first establish a vision, service first , market oriented , create a famous brand of XINFEIG.



Henan Feilong Engineering Manufacturing Co., LTD

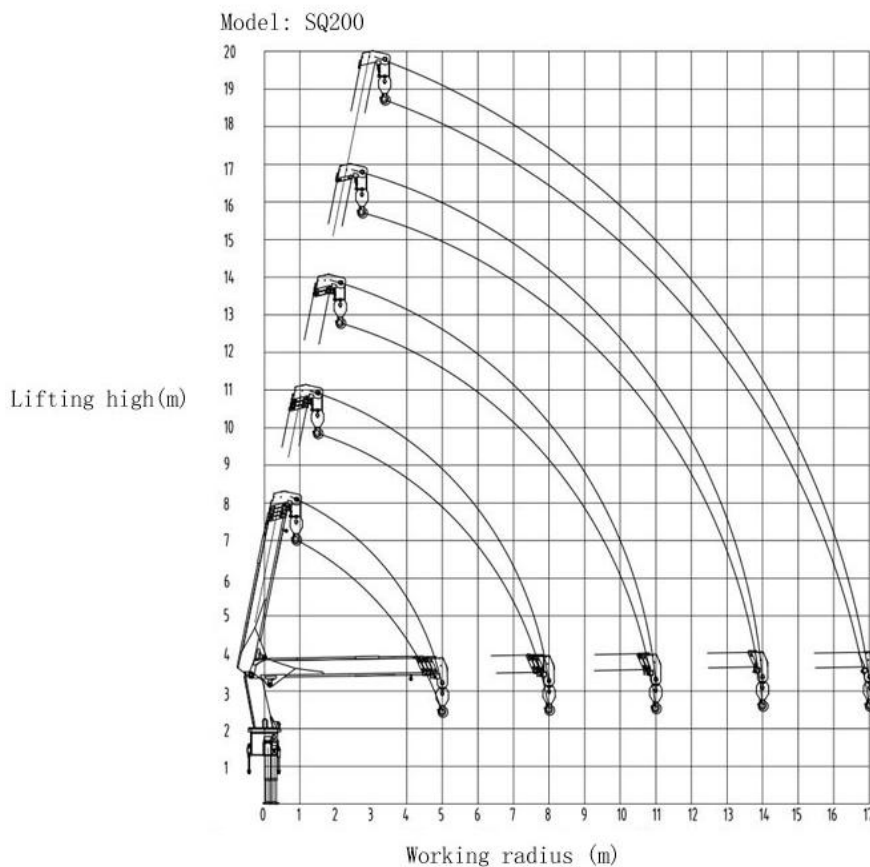
Add: No. 1 Weilai Avenue Industry Gathering Area of Lankao County Kaifeng City Henan Province

Mob& Wechat& Whatsapp: +86-157 1388 7786

E-Mail: XFGCrane@gmail.com

working radius

full-extend outrigger , arm at the side or the rear



Product Quotation

Item	Truck Mounted Crane	
Unit Price	FOB Qingdao port China	USD
Payment terms	T/T, 50% as deposit, 50% balance before shipment	
Produce time	20 days (1-10 unit)	
Warranty	12 months, including all crane structure and hydraulic parts,	
Warranty statement	1.If the crane fails during the warranty period, the user needs to keep the original state of the failed assembly and parts, fax the text and the location of the damage, and our company will mail the spare parts. 2.Users should read the product instruction manual and quality warranty manual thoroughly, and strictly follow the regulations and requirements of the product instruction manual for use.	



Henan Feilong Engineering Manufacturing Co., LTD

Add: No. 1 Weilai Avenue Industry Gathering Area of Lankao County Kaifeng City Henan Province

Mob& Wechat& Whatsapp: +86-157 1388 7786

E-Mail: XFGCrane@gmail.com

Production equipment



Laser cutting machine



Plate leveling machine



Sand dusting machine



CNC machining center



Rocker drilling



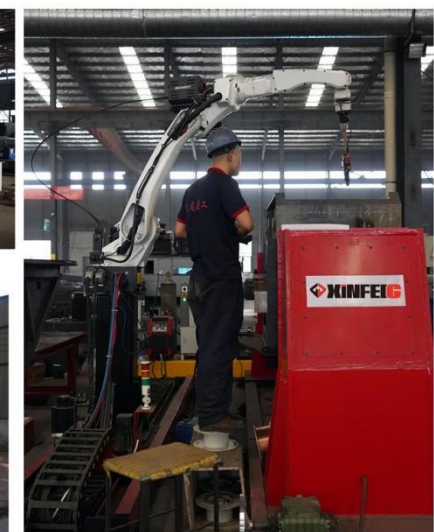
Spay booth



Boring machine



Automotive welding



Welding robot



Bending machine



Shearing machine

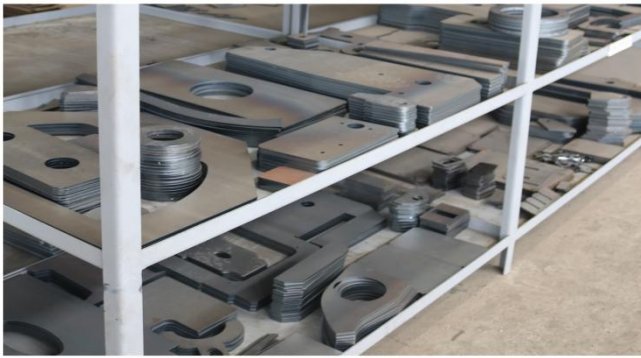


Henan Feilong Engineering Manufacturing Co., LTD

Add: No. 1 Weilai Avenue Industry Gathering Area of Lankao County Kaifeng City Henan Province

Mob& Wechat& Whatsapp: +86-157 1388 7786

E-Mail: XFGCrane@gmail.com



Advantages of laser cutting to steel plate high accuracy of non-deformation cutting of steel plate , for next process standard .



Pipeline operation flow ensure that each component has no technological defects .



Henan Feilong Engineering Manufacturing Co., LTD

Add: No. 1 Weilai Avenue Industry Gathering Area of Lankao County Kaifeng City Henan Province

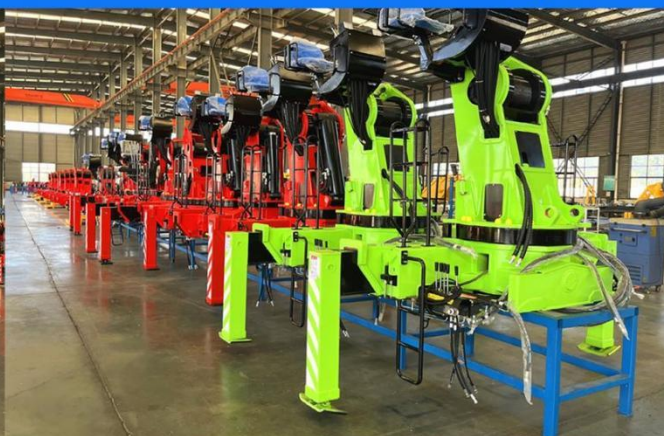
Mob& Wechat& Whatsapp: +86-157 1388 7786

E-Mail: XFGCrane@gmail.com

Truck mounted crane assembly line



Truck mounted crane assembly line



Aerial working platform assembly line



Mobile crane assembly line



Truck Crane Assembly Line



Truck Crane Assembly Line



Henan Feilong Engineering Manufacturing Co.,LTD

Quality crate trust



Henan Feilong Engineering Manufacturing Co., LTD

Add: No. 1 Weilai Avenue Industry Gathering Area of Lankao County Kaifeng City Henan Province

Mob& Wechat& Whatsapp: +86-157 1388 7786

E-Mail: XFGCrane@gmail.com



CLIENT VISIT



AMERICAN CLIENTS 2013



PAKISTAN 2014



Kazakhstan CLIENTS 2016



AMERICAN CLIENTS 2013



INDIA CLIENTS 2018



AMERICAN CLIENTS

Vehicle certificate

Henan Feilong Engineering Manufacturing Co.,LTD

Quality crate trust

